

Property Overview

Retail center in Warren, MI



General Information:

- 27860 Van Dyke Avenue, Warren, MI 48093
- 6,210 square feet available
- Ample parking
- Total Building Size: 54,078 square feet
- Located less than half a mile from I-696 major freeway and located on very busy Van Dyke Avenue.
- Come join tenants such as Dollar General, Employ Bridge, Kelly Beauty, and more.
- High traffic counts

Commercial Real Estate Services
Property Management
Brokerage

51863 Schoenherr Road, Suite
102, Shelby Township, MI
48315

Phone: 586-228-2232

Email: Larry@hrgproperty.com
Jordan@hrgproperty.com

WEBSITE : www.HRGproperty.com

LEASE PLAN OVERVIEW

MARTIN ROAD

PARKING

NAAN STOP
GRILL

DOLLAR
GENERAL

EMPLOY
BRIDGE
STAFFING

KELLY
BEAUTY

AVAILABLE
6,200 SQUARE
FEET

PARKING

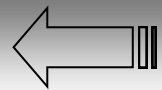
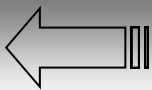
PARKING

PARKING

PARKING

PARKING

PARKING

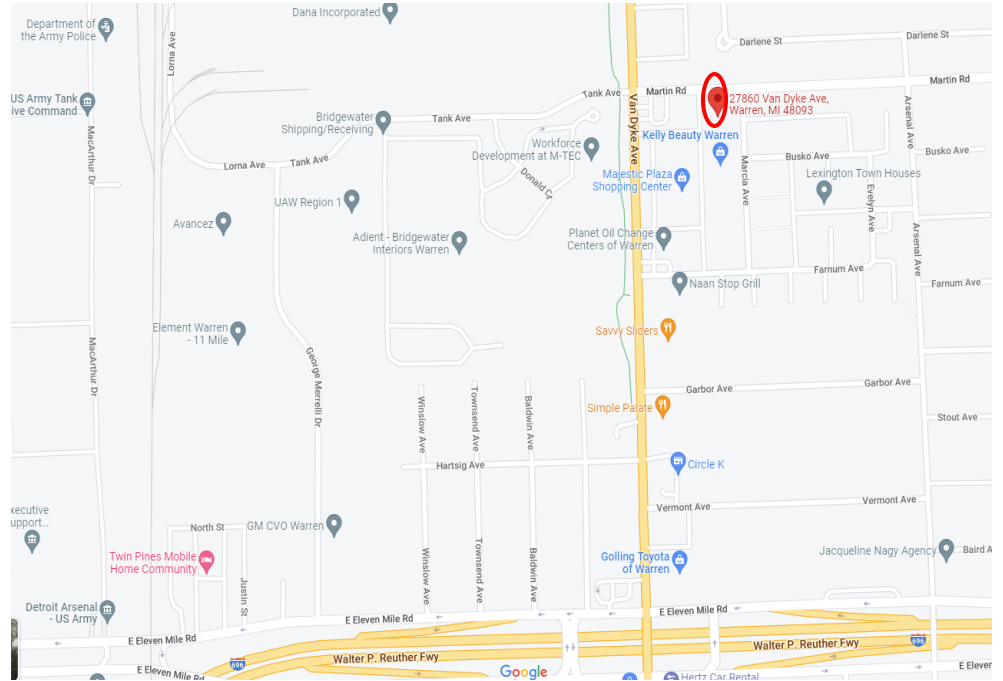


VAN DYKE AVENUE



WEBSITE : www.HRGproperty.com

MAPS

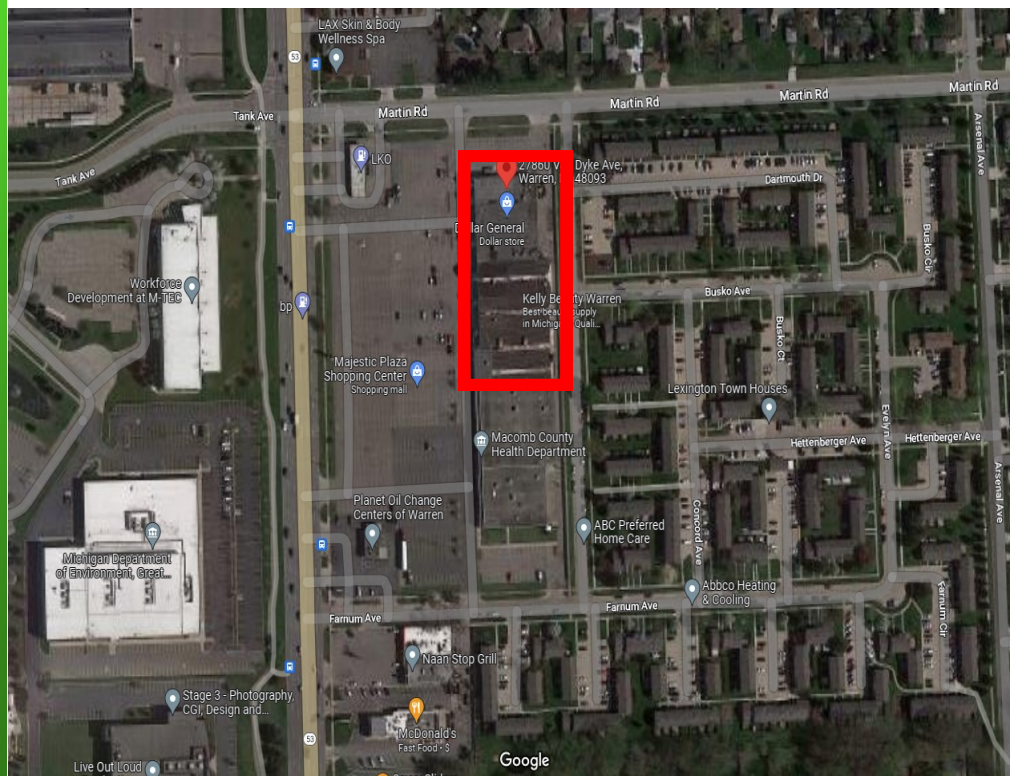


**Commercial Real Estate Services
Property Management
Brokerage**

**51863 Schoenherr Road,
Suite 102, Shelby Township,
MI 48315**

Phone: 586-228-2232

**Email: Larry@hrgproperty.com
Jordan@hrgproperty.com**



WEBSITE : www.HRGproperty.com