

Crystal Commons Plaza

Prime Location Retail Center in Clinton Twp, MI



Commercial Real Estate Services
Property Management
Brokerage

51863 Schoenherr Road
Suite 102, Shelby Township, MI
48315

Phone: 586-228-2232

Email:

Larry@hrgproperty.com
Jordan@hrgproperty.com

General Information:

- 40775 – 40821 Garfield Rd. Clinton Twp, MI 48038
- Plaza Cornering 18 Mile & Garfield
- Great Location / High Visibility
- Ample parking throughout center
- HIGH Traffic Volumes
- Garfield Rd Northbound Traffic = 18,482 AADT
- Garfield Rd Southbound Traffic = 17,957 AADT
- Come join tenants such as Dollar Tree, Metro PCS, Leila's Lebanese kitchen, & more

WEBSITE : www.HRGproperty.com

LEASE PLAN-OVERVIEW



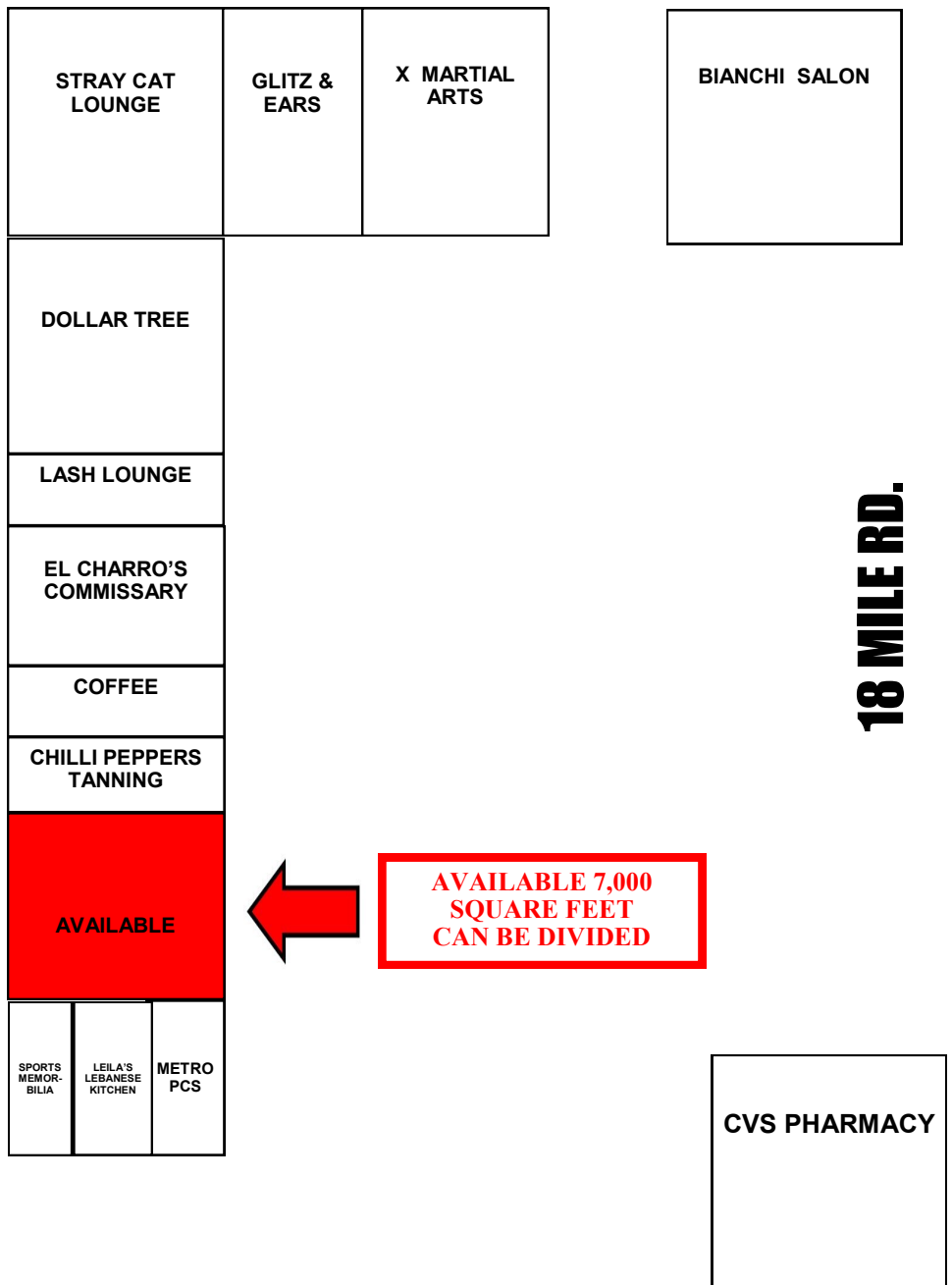
51863 Schoenherr Road
Suite 102, Shelby Township,
MI 48315

Phone: 586-228-2232

Email:

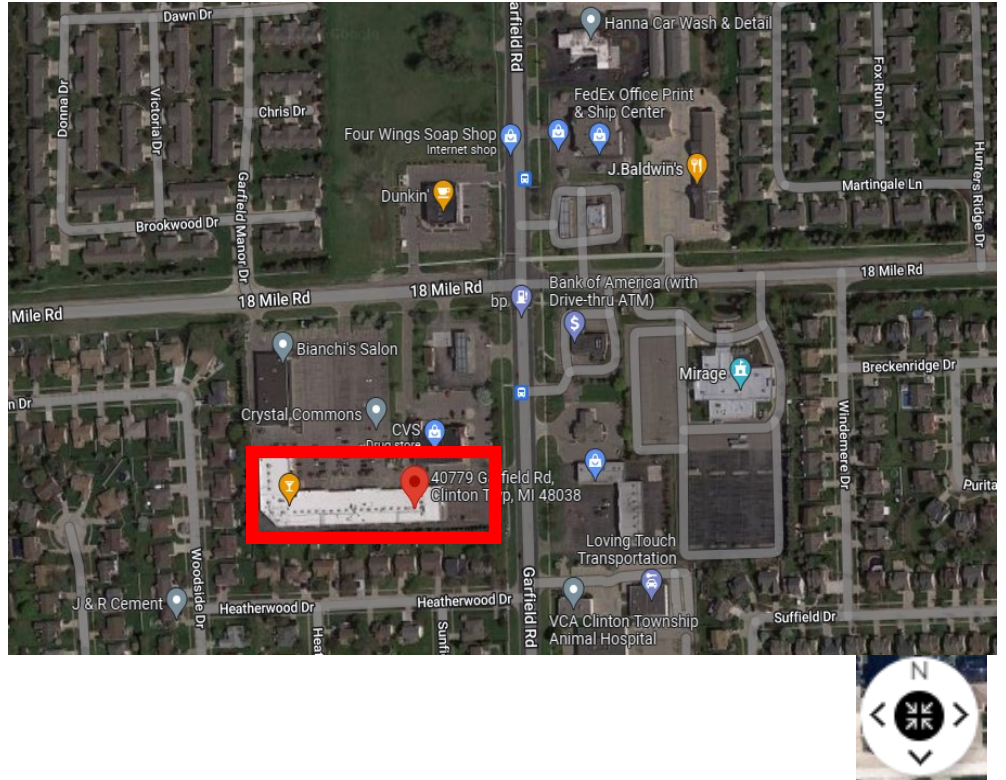
Larry@hrgproperty.com

Jordan@hrgproperty.com



WEBSITE : www.HRGproperty.com

MAPS

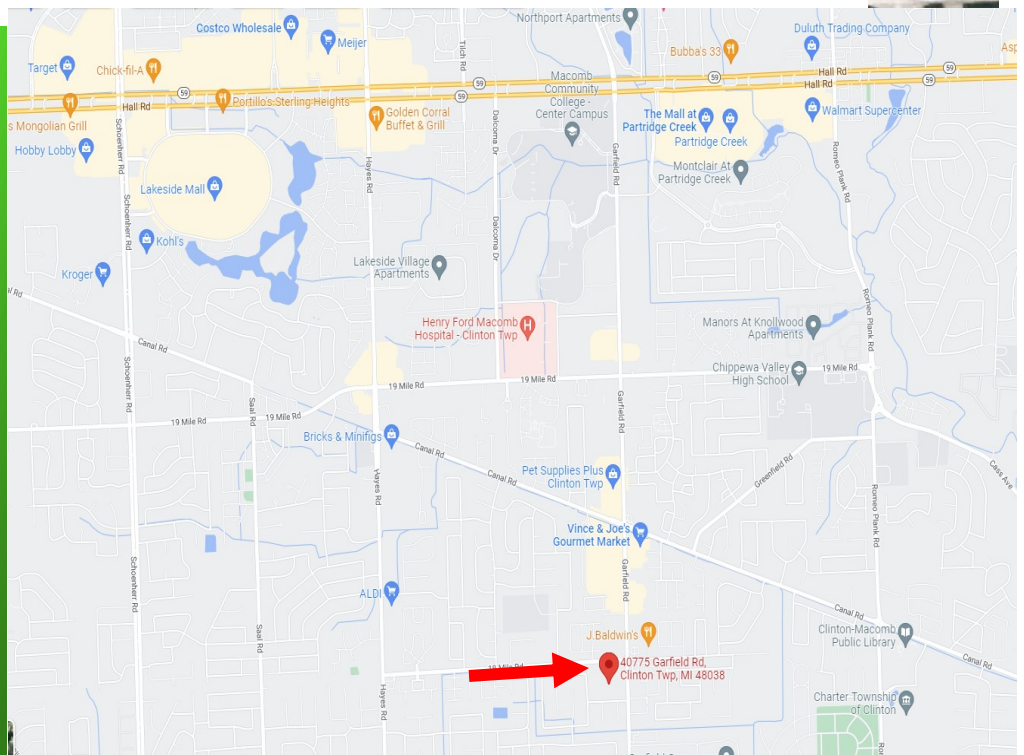


51863 Schoenherr Road
Suite 102, Shelby Township,
MI 48315

Phone: 586-228-2232

Email:

Larry@hrgproperty.com
Jordan@hrgproperty.com



WEBSITE : www.HRGproperty.com